



NEWSLETTER JANUARY 2021

Dear EASSW Member,

With this newsletter we want to update you about the main developments of our association and other events that may be of your interest.

I) Letter from the President,

Dear EASSW members, social work educators, students and EASSW friends



I open this newsletter with my **best wishes for prosperous and joyful new year.**

The year we left was difficult and complex and **we all faced radical challenges**, totally unexpected.

Sometimes we succeeded sometimes we failed but, showing resilience and capacity to adapt, we also drawn some important learnings. We re-discovered how deep is our **interdependency** and how **vital and nurturing are relationships and solidarity**. These teachings will not remain unheard.

This winter newsletter reports about what the EC have settled in this second part of the year. Mainly, we focussed on the **organisation of the conference** and the strengthening of activities for members. Thanks to the valuable cooperation of Karmen Toros and the Tallinn University team, and the **conference** committees, the

enjoyable.

We strengthened the **activities devoted to members**.

From the creation of Special Interest Groups (SIG) to the increase of funds for small projects and regional conferences (we hope you will use for your international exchanges, for e.g. the WSWD celebration!), to the establishment of an award for SWE. We hope all these activities will enhance the vital exchange of knowledge and practices. Further on you will find all relevant information, thanks to the careful editorial work of Florin Lazar

Finally, let me conclude with a message of gratitude for you all and for your engagement in social work and social work education, and especially for the board member. As you maybe have known, in June 2021 I will **stop my mandate as the President** of the EASSW. I am deeply grateful for having had the opportunity to share this journey with so many exceptional and wonderful people, which I truly respect and appreciate. In this journey I have learned a lot; I hope I have been also able to give.

Teresa Bertotti,
EASSW President.

II) EASSW biannual conference – Tallinn 2021

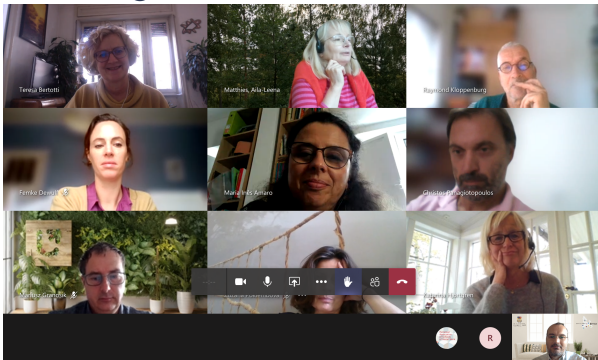


The **European Conference for Social Work Education (ECSWE) 2021**, EASSW biannual conference, will take place virtually in **June 15-18, 2021**, in partnership with Tallinn University, Estonia with the theme: *"Innovation*

Keynote speakers are: Christine Morley, Karmen Toros and Yuri Kazepov. Check out the conference website for more details: <https://ecswe2021.org>

III) Activities of EASSW

a) The EASSW Executive Committee meeting



EASSW

European
Association
of Schools
of Social Work

Because the COVID-19 pandemic, the meeting of the **Executive Committee took place online in October 26th and 27th 2020.**

During the meeting the **Supplement to the Strategic plan of EASSW for 2020 – 2023** was updated and aims at increasing the types and extent of activities for member schools.

It can be found online here: <https://www.eassw.org/wp-content/uploads/2020/12/Supplement-and-Roadmap.pdf>

Minutes of the EC meeting will be found on the dedicated section of the website, accessible for member schools.

The next EC meeting is planned to take place virtually, in March 22nd - 23rd, 2021.

Communication Call for Project Proposals



The European Association of Schools of Social Work (EASSW) is **inviting applications** for a project to serve as communication support for its activities.

Deadline: January 31st 2021

Details here: <https://www.eassw.org/wp-content/uploads/2020/12/EASSW-Call-for-applications-communication-support4dec2020.pdf>

c) CALL FOR CANDIDATES FOR THE EXECUTIVE COMMITTEE



The Election Committee of the EASSW **invites you to present candidates for the Executive Committee**. We kindly invite candidates who wish to participate actively in the activities of the EASSW Executive Committee. Please note that this year **7 positions** as **board member** and **three positions** as **officers** are up for elections.

More details for candidates:
<https://www.eassw.org/wp-content/uploads/2020/12/2021-call-for->

d) The EASSW Project Funding for Promoting Social Work Education



EASSW **invites proposals for projects** designed to promote the quality of European Social Work Education. Annually **two grants of up to 6 000€** are available as co-funding for innovative projects of European collaborative networks.

The next round of applications is closing on **February 15th 2021**.

<https://www.eassw.org/call-for-project/>

e) Launch of Special Interest Groups (SIGs)



EASSW supports the **building of networks and collaboration** between relevant actors of Social Work Education. To provide members opportunities to get to know other members which share similar interests **EASSW is now working to establish Special Interest Group (SIGs)**.

<https://www.eassw.org/launch-of-eassw-sigs/>

Education



The European Association of Social Schools is proud to **support regional events** promoting quality of European Social Work Education. Regional events **can be online or offline**, involving at least one EASSW member school or association. Annually **two grants of 2000€** will be offered **as co-funding to reinforce and help regional events of European collaborative networks**. For events organised until the end of July we are still accepting late proposals until January 31st. For events organised between July 31 and December 31st the next deadline for applications will be July 1st 2021. **In this pandemic situation the EASSW is accepting applications although the deadline.**

Details here: <https://www.eassw.org/support-regional-events-2/>

g) Advisory Council



The Membership Working group is **developing the organisational structure** for the establishment of the **Advisory Council of EASSW**. The

The call for proposals for the Advisory Board will be open during the **ECSWE 2021 in June**.

h) Countries coordinators

To help members to have a stronger relation with EASSW **we renewed the role of the country coordinator**'. The Country Coordinator is a member of the EC that is regionally near or has already some contacts with your country. He/she has the task of helping members and new interested Schools to become stronger actors in social work education and to reinforce their relationships with EASSW. **You can therefore address the country coordinator to have news about EASSW**, and to discuss any other problems regarding social work education you think would be of interest, as well as making proposals of new topics and actions.

Here is the updated list of country coordinators:

<https://www.eassw.org/countries-coordinates/>

Remember, you can give visibility to your social work school in Europe and you can show your activities and create connections. Here

link: <https://www.eassw.org/membership/list-of-members-schools/>

i) EASSW awards for Education in Social Work



In the development of its activity

an award for educators, students, researchers, professionals, volunteers and service users which significantly contribute to an improvement of quality in Social Work Education (SWE).

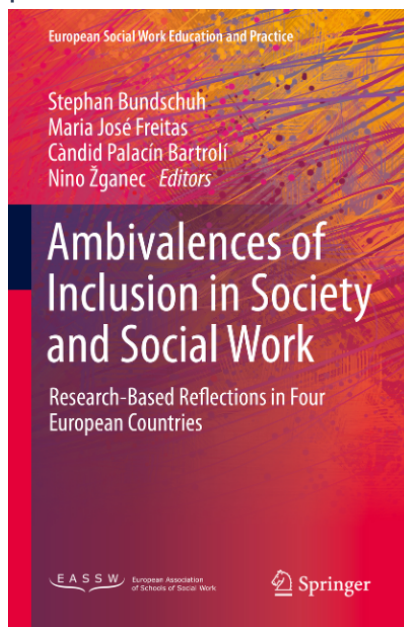
The awards consider **three different categories**:

- a. Pedagogical and practice experiences in SWE;
- b. Research on Social Work education;
- c. Social work student project or thesis

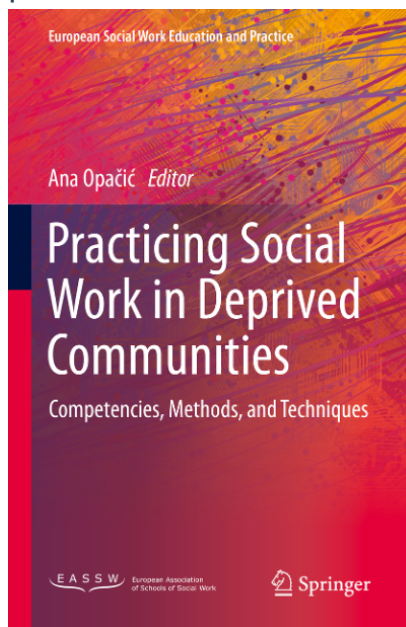
Stay tune and visit our website for more!

j) EASSW - Springer Book series: European Social Work Education and Practice

The book “Ambivalences of Inclusion in Society and Social Work: Research-Based Reflections in Four European Countries”, edited by Stephan Bundschuh, Maria Jose Freitas, Candid Palacín Bartrolí and Nino Žganec is just being published. It is the second volume of the European Social Work Education and Practice Series. The series is the result of a collaboration between the EASSW and the renowned Springer Nature publisher.

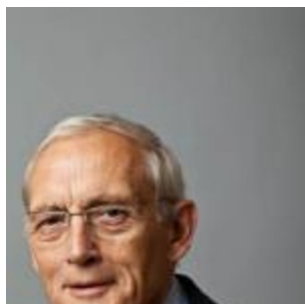


Techniques.", edited by Ana Opačić, PhD, is due to be published on March 1st 2021.



More details on the book series:

<https://www.springer.com/series/16359?detailsPage=titles>



Hans-Uwe Otto

It is with great sadness that we must pass on the news of the death of our friend and colleague Hans-Uwe Otto, Senior Research Professor at Bielefeld University. We honour him and his work by continuing to pursue this quest in his spirit, but we mourn this bitter loss and extend our deep sympathy to his bereaved family.

An obituary written by Walter Lorenz and Franz Hamburger honoring him is to be found on the website of the European Journal of Social Work:
<https://www.tandfonline.com/doi/full/10.1080/136914>



IV) Events/activities of member schools

Tallinn University has opened a call for Professor of Social and Population Policy.

PROFESSOR OF SOCIAL AND POPULATION POLICY

The position will be filled from 01.09.2021

Description of the field of the academic work: the position of professor combines the high-level research performed in the Estonian Institute for Population Studies with education in the main fields of responsibility of Tallinn University (in the social services study programme group, and in the sociology, culturology, political science and civic education study fields in the social sciences study programme group). The aim of the professorship of social and population policy is to increase the interdisciplinary capability of the School of Social Sciences through connecting the political analysis know-how of the political science and citizenship studies discipline with the applied know-how of the social work discipline. The professorship of social and population policy is also important for strengthening the Centre of Excellence in Interdisciplinary Life-course Studies of the School of Social Sciences through shaping life-course based policies and studying their effect.

REQUIREMENTS FOR THE CANDIDATE

- The candidate must have a doctoral degree or equivalent qualification

Academic Activity Requirements:

- Strong research and publication track record;
- Considerable demonstrable knowledge in the field of social and population policy;
- Experience in applying and coordinating for research funding;
- Experience in coordinating research projects;
- Pedagogical experience in teaching and supervising on MA and PhD level, including at least one successful PhD defense;
- Experience in organising (international) academic events (conferences, workshops, etc).

Leadership aspects of the role: The position requires good leadership skills in terms of managing research groups. Furthermore, dedication, effective communication and motivational skills are needed for leading research groups. As one of the priorities of SOGOLAS is interdisciplinary approach in terms of research, the candidate should uphold such way of thinking.

THE DUTIES ARE APPROXIMATELY DIVIDED IN:

- research (40-60 %)
- teaching (30-40%) and
- internal and external service (10-20%). Position includes leading the Study Area or actively contributing to its further development

LANGUAGE SKILLS:

- English on the level necessary for conducting teaching and research work - C1;
- An employee who does not speak Estonian is expected to start acquiring proficiency in Estonian upon starting work and achieve language proficiency level B1 within three years and a level comparable to level B2 within five years in order to be able to perform tasks related to institutional development and administrative work in Estonian.

WORKING LOAD: 1,0 (40 hours a week).

Required application documents shall be submitted by 20th January 2021 (incl) to Personnel Office of Tallinn University.

Additional information: Please address your administrative questions to konkurss@tlu.ee, and questions on the content to the Administrative Head of the School of Governance, Law and Society Anneli Kommer, anneli.kommer@tlu.ee



TALLINN UNIVERSITY

V) Special events about social work education at international level

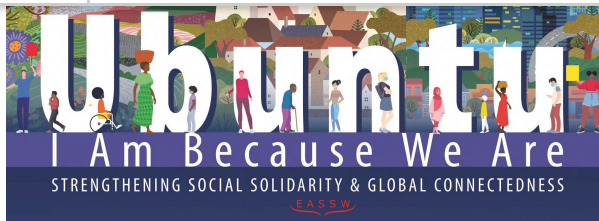


a) WSWD 2021

EASSW is happy to join the IASSW and IFSW in the

[Subscribe](#)[Past Issues](#)[Translate ▼](#)

World Social work day on the 16th March. The common



theme chosen is the Solidarity and is highlighted by the **Ubuntu: I am Because We Are**. We invite all members to use the poster, and to post their initiatives on the EASSW websites and social media. More information here: <https://www.iassw-aiets.org/featured/5883-world-social-work-day-2021/>

b) In connection with IASSW

EASSW is formal member of the International Association of Schools of Social Work. In this duty participates, supports and promotes the activities of IASSW.

- The new education commission of IASSW and IFSW published the updated Global Standards for Social Work Education and Training. EASSW President, Teresa Bertotti participated in this important endeavor.

Details here: <https://www.iassw-aiets.org/featured/5867-announcement-of-the-updated-global-standards-for-social-work-education-and-training-the-new-chapter-in-social-work-profession/>

- The new Global Agenda for Social Work and Social Development for 2020 to 2030 was approved by IASSW, ICSW and IFSW with the general theme: "Co-Building Inclusive Social Transformation". Details here: <https://www.iassw-aiets.org/consultation-on-next-global-agenda-2020-2030/5734-2020-to-2030-global-agenda-for-social-work-and-social-development-framework-co-building-inclusive-social-transformation/>

[Subscribe](#)[Past Issues](#)[Translate ▼](#)

Perspective – an online survey endorsed by IASSW. Details here:
<https://suset.artologik.net/mau/Survey/8886>

c) Collaboration with ESWRA

As part of the collaboration between EASSW and ESWRA, **Teresa Bertotti EASSW president was invited to deliver a speech** at the opening ceremony of the **ESWRA conference in Bucharest, May 5-7, 2021.**

VI) Upcoming conferences and seminars

We have received the following information regarding international conference and seminars. Please remember that we are happy to advertise the prominent conference:



- **ECSWR 2021: “Social work research: Contributing to innovation in practice, policy and social development”** - The 10th edition of The European Conference for Social Work Research (ECSWR 2020) will be held in Bucharest, Romania between the May 5-7, 2021.

[Deadline for abstract submission: February 1st 2021.](#)

Details here:

<https://www.ecswr2020.org/en/Default.asp>

- **The 4th European Conference on Domestic Violence**, September 13-15, Slovenia, Ljubljana.

[Deadline: February 28th 2021](#)

VII) Publication Opportunities and Active calls for papers



Social Work - Pandemics, Economics, Systems, and the Future of Social Work

Deadline: January 29 2021

Details here: <https://static.primary.prod.gcms.the-infra.com/static/site/sw/document/updated-call-for-papers-pandemics.pdf?node=08887ac27b2e854a7f6a&version=145786:c70f398748c42eec4db6>

Children & Schools - Social-Emotional Learning and Contemporary Challenges for Schools

Deadline: January 31st 2021

Details here: https://static.primary.prod.gcms.the-infra.com/static/site/cs/document/CALL_FOR_PAPERS_Social-Emotional_Learning_and_Contemporary_Challenges_for_Schools.pdf?node=2a271f8c05291e74adb4&version=106783:91b5d9517666e741f428

Advances in Social Work- Re-Envisioning the Social Work Profession, Education, and Practice

Deadline: January 31 2021

Details here:
<https://advancesinsocialwork.iupui.edu/index.php/advancesinsocialwork/announcement/view/76>

Revista de Asistentă Socială/Social Work Review - Risk in social work practice.

Deadline: June 1st 2021.

Details here: <http://www.swreview.eu>

[Subscribe](#)

[Past Issues](#)

[Translate](#) ▼

Newsletter Coordinated by Teresa Bertotti, Edited and Written by Florin Lazar, Reviewed and Published by Sandra Mendes.



Copyright © 2021 EASSW, All rights reserved.

Want to change how you receive these emails?

You can [unsubscribe from this list here](#)

